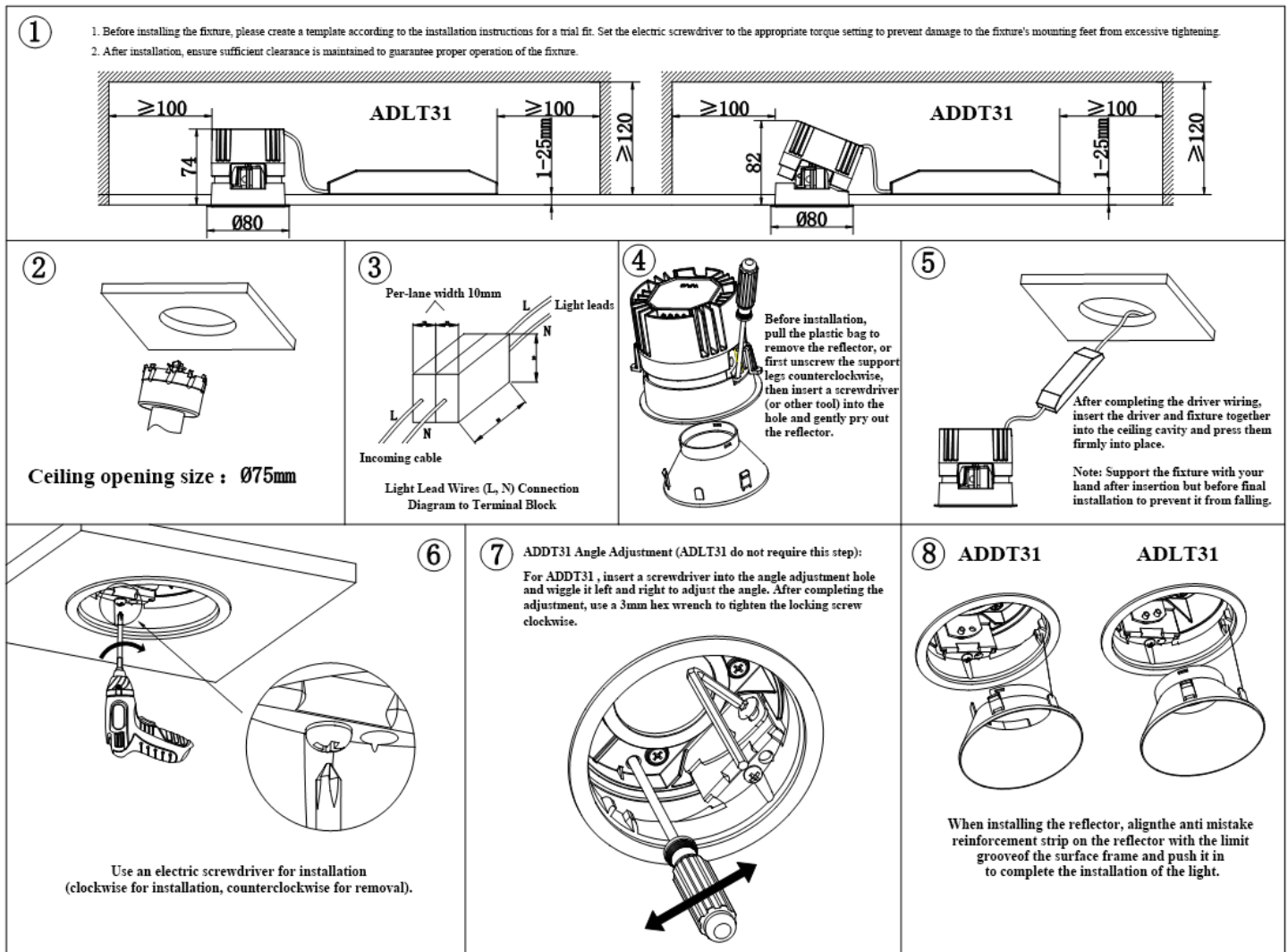


**Installation Declaration:**

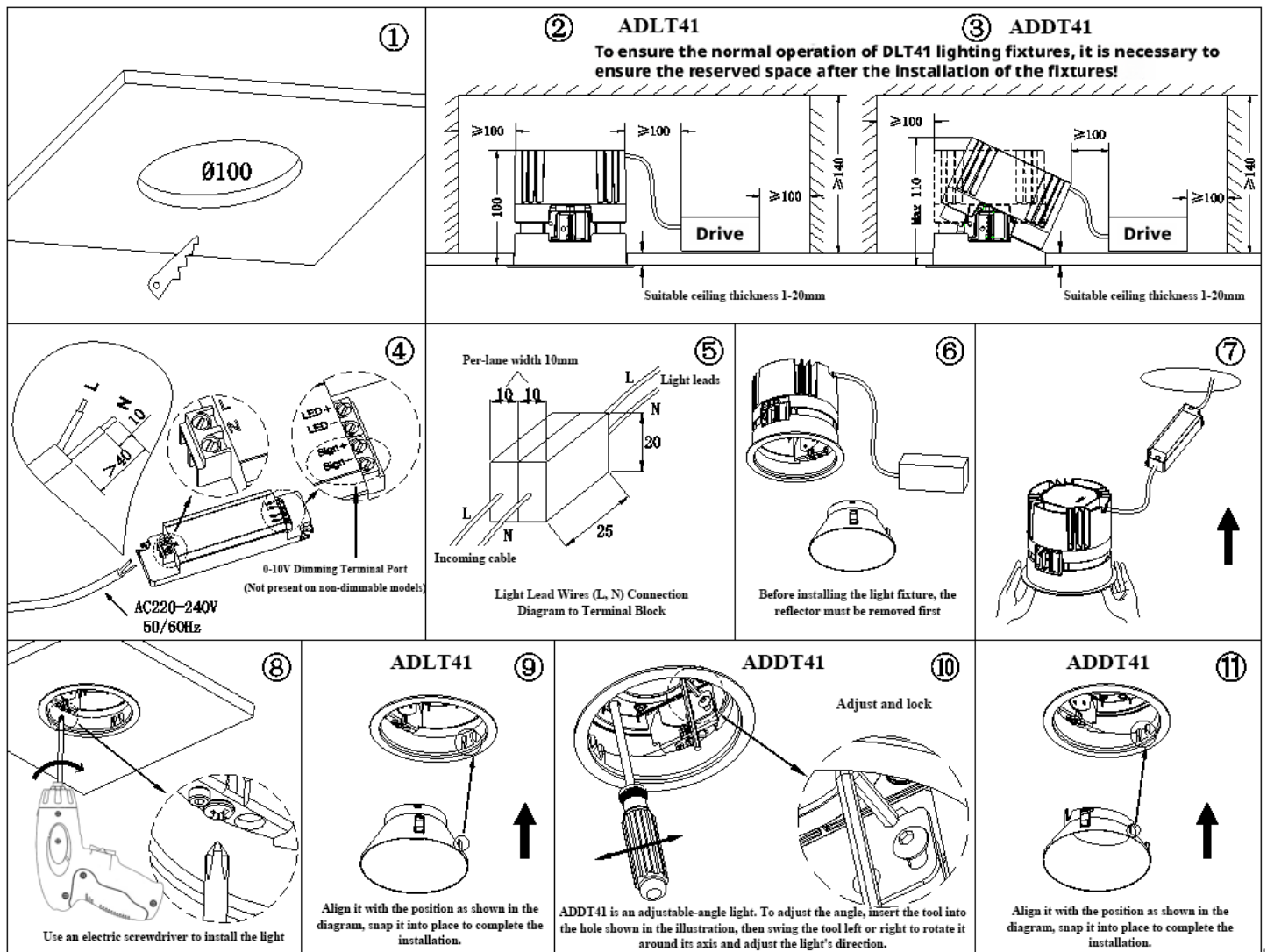
1. Please read the manual carefully before installation;
2. Please have a professional electrician perform the installation;
3. To avoid the risk of electric shock, please ensure the power is turned off before installation and maintenance;
4. The fixture can be recessed into the ceiling surface, and sufficient installation space must be reserved. Do not cover the fixture with insulation materials or flammable substances to avoid fire hazards;
5. If the glass is cracked, please replace it immediately;
6. Do not install the fixture on an unstable or weak skylight to prevent it from falling;
7. Keep the manual for future reference;
8. The light source inside this fixture should be replaced by the manufacturer, its service agent, or a person with similar qualifications.

**Wiring for fixture installation:**

### Installation Declaration:

1. Please read the manual carefully before installation;
2. Please have a professional electrician perform the installation;
3. To avoid the risk of electric shock, please ensure the power is turned off before installation and maintenance;
4. The fixture can be recessed into the ceiling surface, and sufficient installation space must be reserved. Do not cover the fixture with insulation materials or flammable substances to avoid fire hazards;
5. If the glass is cracked, please replace it immediately;
6. Do not install the fixture on an unstable or weak skylight to prevent it from falling;
7. Keep the manual for future reference;
8. The light source within this fixture should be replaced by the manufacturer, its service agent, or a person with similar qualifications.

### Wiring for fixture installation:



- \* If the lamp's electrical appliance comes with a built-in lead, and this connecting lead needs to be connected to an independent terminal block (refer to Figure 5 for the wiring diagram), each terminal block size should not be less than 10x20x25mm.
- \* For lamps without electrical appliances, if the lamp has brown and blue leads, it cannot be directly connected to 220V AC. The customer must provide their own electrical appliance, which needs to be compatible with the light source.